

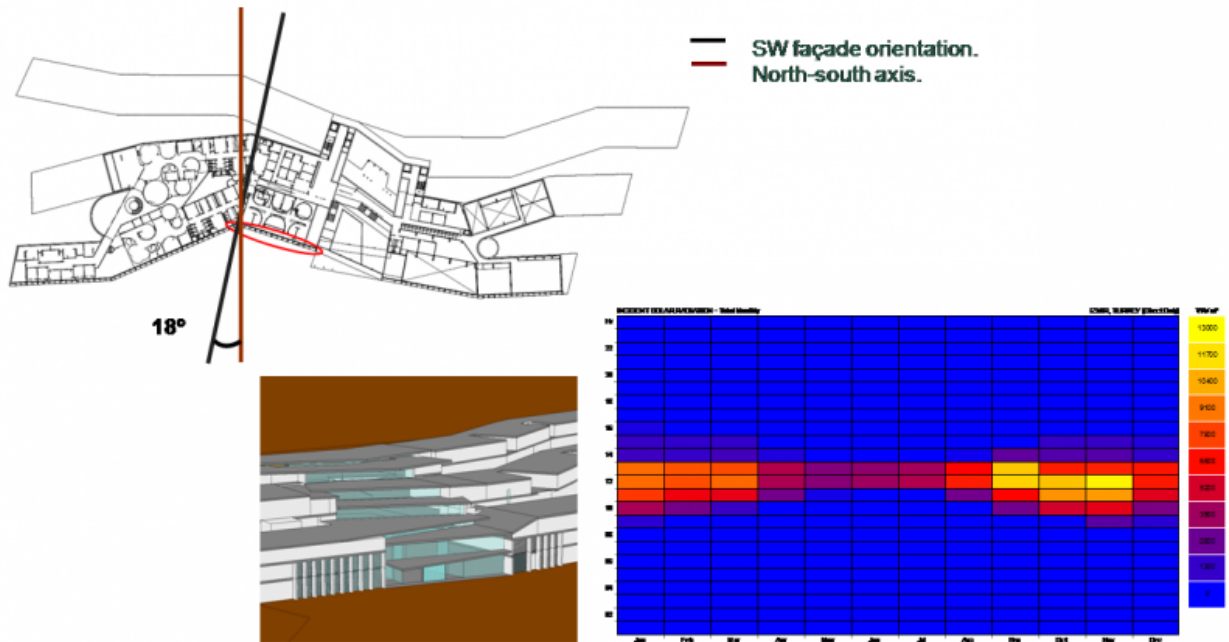


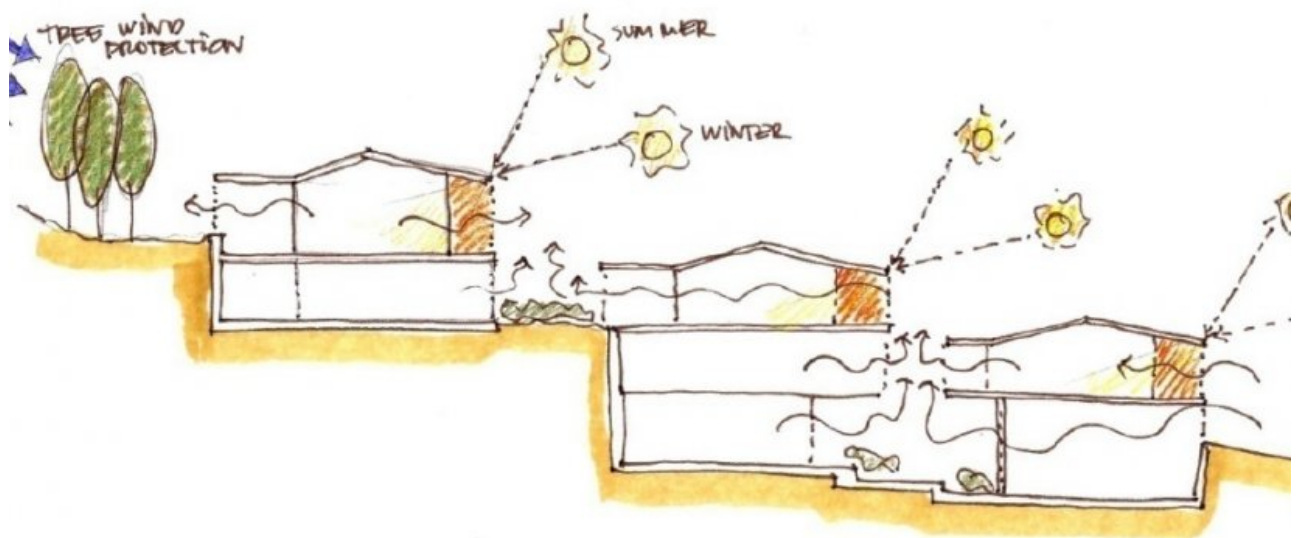
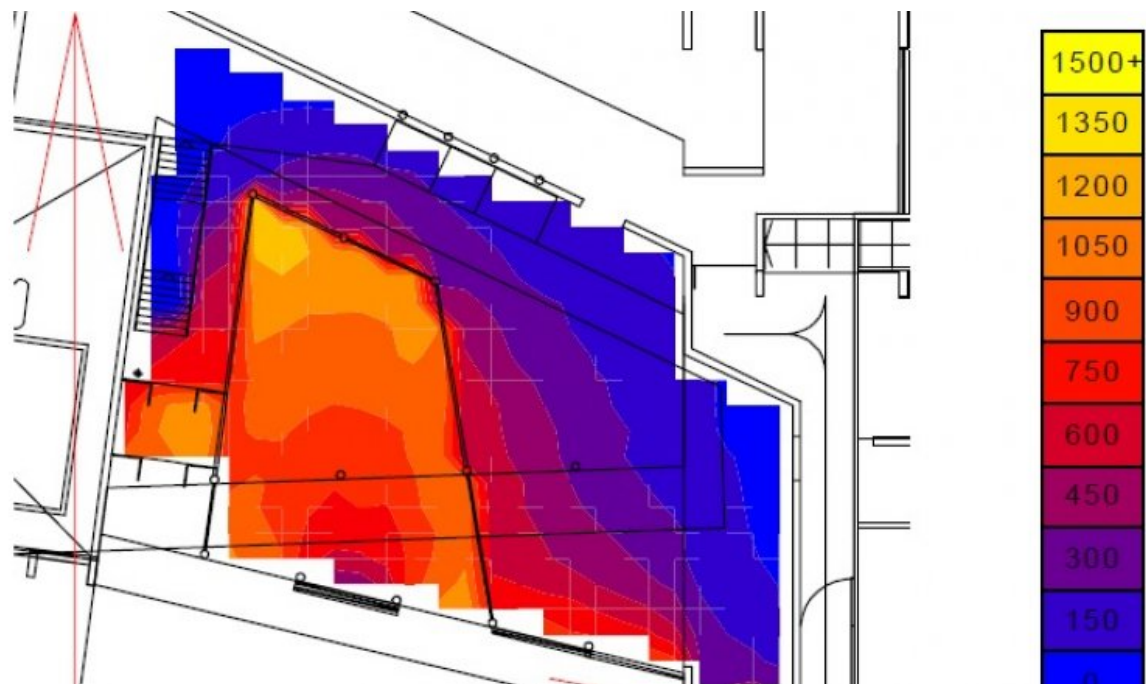
ESTUDI RAMON FOLCH I ASSOCIATS, S.L.

Published on *Estudi Ramon Folch i Associats S.L.* (<https://erf.cat>)

## Support for sustainability in the design of 35 hectare resort in Turkey

Technical assistance to the OAB architecture team for the sustainability master plan, and schematic and detailed design





*Hotel winds and radiatio  
Section and plant*

**Category:**

[Eficiència energètica](#) [1]

**Client**

Client privat

**Location**

Turquia

**Period**

2012

**Motivation**

- Residential project of 200 hectares.
- Master plan: 70,000 m<sup>2</sup> GFA
- First phase: 41,000 m<sup>2</sup> architectural projects including the Canyon Ranch Hotel with 24,000 m<sup>2</sup> (70 rooms and 8,000 m<sup>2</sup> spa centre, 80 bungalows and 53 semi-detached rental residences) and

36 detached residences (villas).

## Results

The main output delivered were:

- Analysis of the climate and local conditions.
- Integral water management (rain collecting, treatment and regeneration, desalinisation)
- Overall energy system (supply, district heating & cooling, renewable and high efficiency systems)
- Other analyses: material selection and waste, mobility, smart efficient technologies, design criteria for gardens and landscape.
- Passive design: analysis of light and shade, natural ventilation.
- Energy efficiency technologies: cooling, lighting and control system.
- Water cycle: collection, efficiency and reuse system.
- Selection of materials to minimise environmental impact.

### Categoria

[Eficiencia energètica a edificis nous](#) [2]

### Tags

[ERF al món](#) [3]

[Download pdf](#) [4]

---

**Source URL:** <https://erf.cat/en/projects/support-sustainability-design-35-hectare-resort-turkey>

### Links

[1] [https://erf.cat/en/projectes/?field\\_\\_mbit\\_tid=50](https://erf.cat/en/projectes/?field__mbit_tid=50)

[2] <https://erf.cat/en/categoria/edificaci%C3%B3-sostenible>

[3] <https://erf.cat/en/erf-en-el-mundo>

[4] <https://erf.cat/printpdf/226>